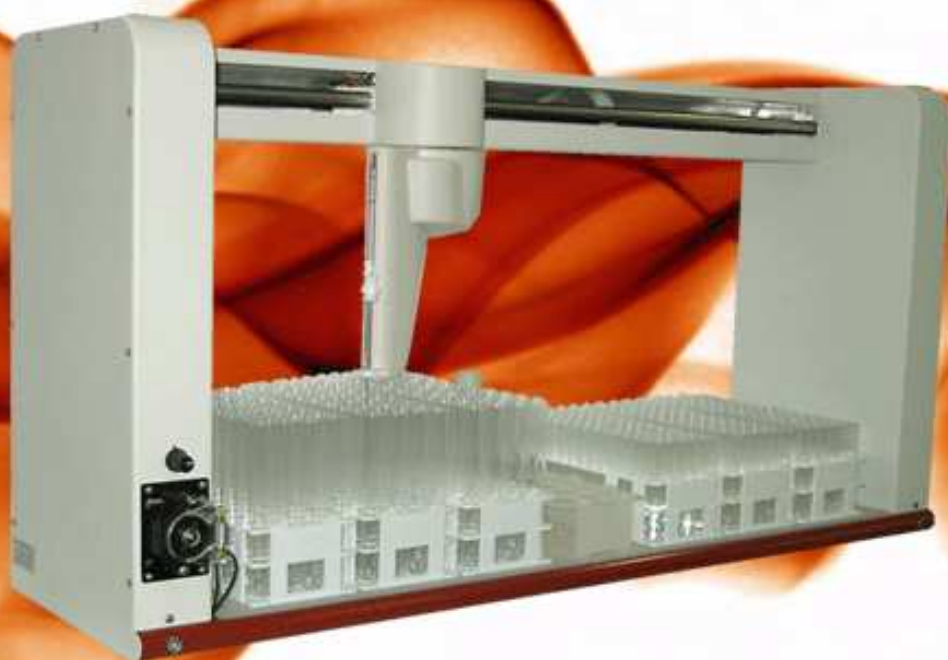


Aim Lab introduces the AIM3600 Autosampler. Unlike traditional linear XYZ autosamplers, the AIM3600 uses a unique Pirouette motion to access all sample positions.

This innovative approach simplifies the design, creating faster and more efficient probe movements. The AIM3600 never needs alignment, doesn't require any maintenance and is able to handle the rigours of working with corrosive samples.



AIM3600 High Capacity Autosampler

AIM3600

The AIM3600 is the latest in autosampler design. Without the need to mechanically move the autosampler body or the samples, the probe speed can be optimised for high throughput applications.

With a long narrow footprint the AIM3600 takes up minimal bench space and offers complete flexibility in the way it can be configured. For example, it can accommodate seven sample racks with two standards racks, one at either end.

Alternatively a high capacity standards rack can be centrally located with three sample racks on either side.

The fixed wash reservoir can be located in one of four positions to optimise probe travel. Alternatively, the Mobile Rinse Station accessory eliminates the need to travel to a fixed wash position between samples to provide an even faster sample throughput.

Features

- High speed probe movement
- Choice of sample racks and adjustable probe depth
- Septum piercing option - for sampling septum capped vials
- Sample capacity up to 630 samples and 22 standards
- Mobile rinse station option
- Narrow footprint
- Relocatable fixed wash reservoir and inbuilt variable speed wash pump
- Protective cover for a controlled environment
- Wide range of accessories



Specifications

Dimensions:

1000mm L x 290mm W x 510mm H
39.4" L x 11.4" W x 20.0" H

Weight:

22kg (48.4lbs)

Rack Capacity:

Up to 7 sample racks and 3 standards racks

Sample Racks:

90 samples x 13mm OD
60 samples x 16mm OD
40 samples x 20mm OD
24 samples x 25mm OD
21 samples x 30mm OD

Standard Racks:

11 stds x 16mm OD
6 stds x 30mm OD
18 stds x 30mm OD

Maximum Vial Height:

150mm

Communication Ports:

Host: 1 x RS232
Aux: 1 x RS232/RS485

Power Requirements:

85-264V, 50/60 Hz

Operating Temp. Range:

10-40°C (50-104°F)

Certification:

International Standard IEC61326:1997 for EMC
International Standard IEC61010:2001 for safety

Warranty:

12 months

aim | **Lab**
Automation Technologies

www.aimlab.com

International Head Office
10-22 Hornibrook Esplanade
Clontarf, Qld 4019, Australia
P: +61 7 3897 1600
F: +61 7 3283 7922
E: aimlab@aimlab.com