

aim|Lab
Automation Technologies

PATHFINDER 350A ARCHIVER

YOUR ANSWER TO CAPPING, SORTING AND ARCHIVING OF
SAMPLE TUBES

PathFinder 350A Archiver

The PathFinder 350A Archiver is a bench top robotic workstation for the post analytical management of sample tubes. For convenience, tubes can be presented to the system directly from analyser racks. Just load the sample racks and walk away.

The PathFinder 350A takes care of the rest, the system automatically caps and sorts sample tubes into low cost storage racks recording the date, time, rack ID and position for each tube. Tubes are capped with a laminated foil which seals the tube from leakage and evaporation during freezer storage or transport.

When interfaced to a Laboratory Information System (LIS), the PathFinder 350A relays each tubes bar code identification to the LIS. If the LIS indicates all tests are complete, the tube will be selectively foil sealed and sent to a storage rack. Tubes with any outstanding tests will be automatically sorted into a different rack for further processing.

Without a LIS connection, all tubes in a presented analyser rack will be foil sealed and archived into storage racks. The tube storage locations can then be retrieved directly from the in-built database which is accessible locally or remotely from any network station in the lab.

The PathFinder 350A's size and flexibility in configuration makes tube automation accessible to small and medium laboratories. With robust functionality, the PathFinder 350A at last provides a simple and affordable solution to automating both the capping and archiving of samples in one system.



Easy access to load new capping foil

Easy-to-Use Software

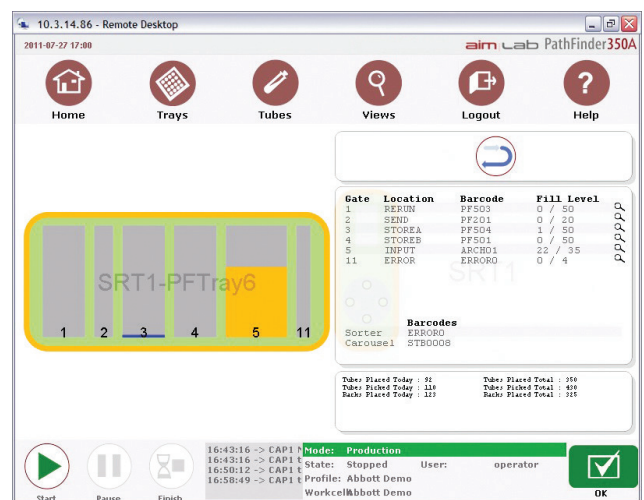
All the operator needs for routine operation is displayed through the Graphical User Interface which provides the current instrument status via coloured graphical displays, intuitive icons and message windows.

More detailed information can be easily obtained as required by clicking on a module graphic or in the case of diagnostics, through help menus.

Search for the location of a specific tube, check to see if racks have been filled/emptied or access a productivity report either through the local touchscreen monitor or anywhere on your network using your browser.

Generate and print a list of samples by well position in a specific destination rack. In the case of samples sent off site, this can be used as a packing or check list.

For samples in containers that don't fit the tube specifications, the software has provisions to accept manually scanned samples to centralise your archiving requirements through the one system.



Applications

- Managing open sample tubes as they are removed from an analyser
- Automated capping of tubes for storage
- Sorting and management of samples for off-site testing ("send outs")
- Segregating tubes into short term and long term storage (serology)
- Post analytical sorting of tubes for aliquoting
- Auditing test panel completeness

Flexible

- Picks directly from a range of analyser racks
- Mix 12mm and 16mm diameter tubes in the same rack
- Quick layout changes from different applications
- Colour coded destination racks for ease of identification
- Different configuration options to access closely spaced tubes
- Choice of different languages
- On board database for operation without a LIS interface

Lab Automation Made Easy

STEP 1

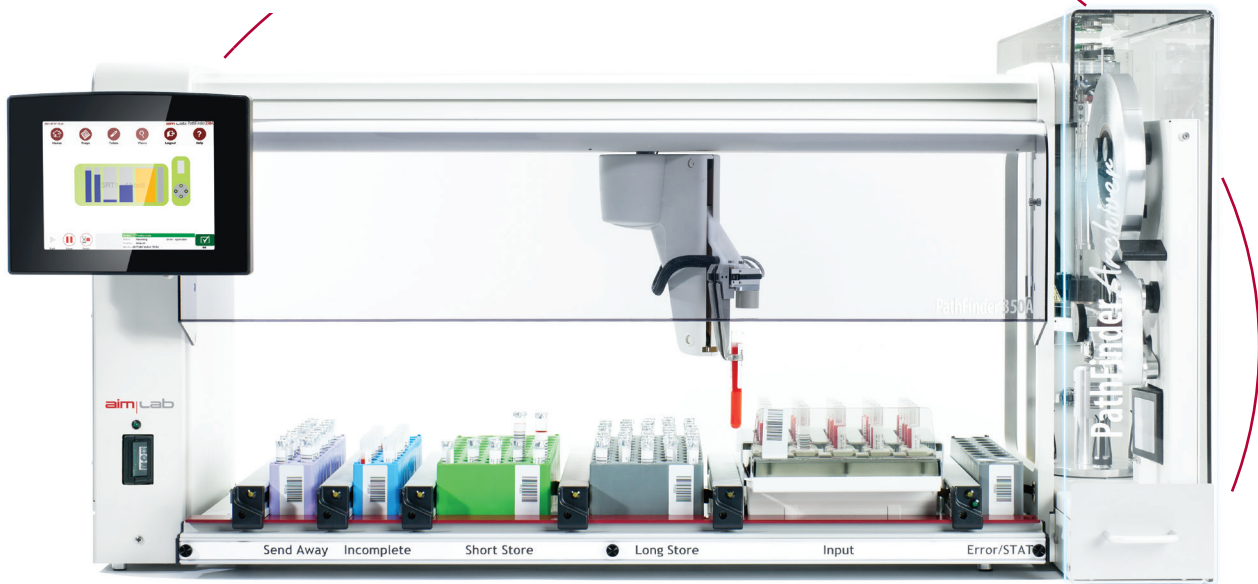
Completed analyser rack is loaded directly onto the PathFinder 350A.

STEP 2

Tubes are sequentially collected, scanned and identified from their bar code id by the LIS.

STEP 3

Tubes are foil sealed if LIS confirms all requested tests have been completed.



STEP 5

Any tubes with outstanding tests are transferred uncapped to a destination rack for further processing.

Standard version of the PathFinder 350A Archiver

STEP 4

Foil sealed tubes are transferred to storage rack for archiving or separate rack for further off-site testing.

Interchangeable deck layouts



Key Benefits

- Automatically caps and stores tubes in one step
- Archives samples in low cost storage racks
- Eliminates RSI injuries from manually capping tubes
- Prevents samples being sent to storage prematurely
- Eliminates manual handling errors
- Reduces biohazard exposure
- Low cap costs compared to other alternatives
- Optimises storage requirements by sorting to different storage racks

Different System Options

In its Standard configuration, the PathFinder 350A can process a mix of 12mm and 16mm diameter specimen tubes storing them into racks that hold 50 tubes. If the diameter of the tubes processed is restricted to 12-13mm, a High Capacity version of the PathFinder 350A Archiver is available, specifically designed to accommodate storage racks holding up to 128 tubes.



High Capacity Version of the PathFinder 350A Archiver

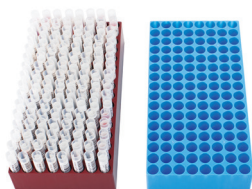
Storage Racks

The PathFinder sample racks have been designed specifically for use on PathFinder automation systems and to provide a high density of samples in a small footprint. They are available in a range of different colors for easy identification. Sample well positions are indexed for easy tube retrieval.

They present a low cost and space efficient solution for managing samples, particularly for storage.



PathFinder PF50 storage racks



PathFinder PF128 storage racks

Learn more about the range of instruments in the PathFinder family.

<https://www.aimlab.com/products/pathology-automation>

PathFinder 350A Archiver Specifications

THROUGHPUT

Up to 350 tubes per hour

ON-BOARD CAP CAPACITY

15,000 caps/roll

TUBE DIMENSIONS

Standard Version:

Diameter: 12 - 16mm

Height: 63 - 105mm (uncapped), up to 120mm (capped)

High Capacity Version:

Diameter: 12 - 13mm

Height: 63 - 105mm (capped or uncapped)

RACK TYPES

PathFinder racks - 20, 50 or 128 well sample racks, available in different colors

Choice of rack adapters for loading different analyser racks

LIS INTERFACE

CLSI/NCCLS LIS1-A (ASTM1381-95) and LIS2-A (ASTM1394-97), bi-directional (TCP/IP or File Transfer)

DIMENSIONS

115cm (45") L x 47cm (19") W x 56cm (22") H

COMBINED WEIGHT

50kg (Sorter module, capper module, specimen tray)

POWER SUPPLY

100 - 240VAC, 47 - 63Hz, 280W, 24VDC output

OPERATING TEMPERATURE RANGE

10 °C - 35 °C (50 °F - 95 °F)

UTILITIES REQUIRED

Power

Network point

Compressed Air

CERTIFICATION

Designed and manufactured in accordance with ISO13485

Meets 2014/30/EU, 2014/35/EU, REACH, RoHS.

COMPRESSED AIR SUPPLY

6 bar, oil-free, filtered



Aim Lab Automation Technologies Pty Ltd
Delivering Confidence

International Head Office
15 Lisgar St, Virginia Qld 4014, Australia
P: +61 7 3897 1600 F: +61 7 3216 2499
E: aimlab@aimlab.com
www.aimlab.com